

**EMERGENCY
EVACUATION PLAN FOR
READSBORO, VT**

**SUDDEN RELEASE FROM
HARRIMAN RESERVOIR**

**HIGH WATER ON WEST BRANCH
OF THE DEERFIELD RIVER**

2005

1. Notification from P.G.&E to Keene Dispatch of sudden release or high water in Harriman reservoir.
2. Keene Dispatch notifies Readsboro Emergency Management.
3. Emergency Management of Readsboro will sound siren, and put EVACUATION PLAN into action.

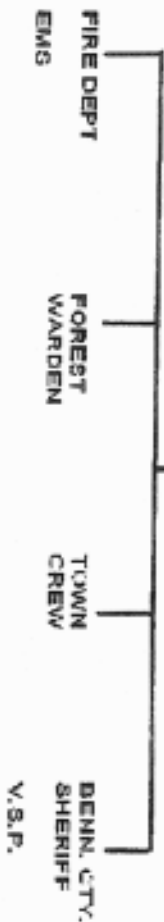
EMERGENCY EVACUATION PLAN

1. Blow whistle.
2. Notify Readsboro Central School.
3. Notify Readsboro Preschool.
4. Assemble Fire Department, Town Crew, Forest Fire Warden.
5. Start evacuation of: Phelps Rd., Whitney Rd., Glen Ave., East Main St., Tunnel St., Depot St., Canal Dr., School St., Main St., Railroad Alley, Lemaire Dr., Brooklyn St., Grinka Farm Rd., Jarvis Hill.
6. Post personnel to close off Readsboro at Branch Hill, Bosley Hill, and Rt. 100 South. Whitingham Fire to close off Rt.100 North, Potter Hill Rd., at King Hill Rd. intersection.
7. If time permits, house to house check.
8. Put E-1 on North Hill, E-2 on South Hill and E-3 on Rt. 100 South, Readsboro Falls.
Command post Rt.100 South W E-3.
 - A. North Adams Ambulance to cover South Hill.
 - B. Deerfield Valley and Whitingham Rescue to cover North Hill & Heartwellville VIA Rt. 9 to Rt.8 to Rt.100 Heartwellville to Bailey Hill Rd. to North Hill.
9. EVACUATION CENTERS:
 - A. Old Coach Inn, Heartwellville
 - B. South Readsboro Community Club, Readsboro
10. Notify Bennington County Red Cross to support help. i.e.: food, shelter, and misc.
11. Notify Bennington County Sheriff & Vermont State Police.

NOTES

1. Flood Stage at 1266 feet.
2. Test Alert Signal first Saturday of the month at 12 noon.
3. Eighteen minutes from notification to flood stage at 1266 feet.

EMERGENCY MANAGEMENT DIRECTOR



**FIRE DEPT
92-C-1**

**FOREST
WARDEN**

**TOWN CREW
ROAD FOREMAN**

**LAW
ENFORCEMENT**

remove fire trucks
to higher ground
help with
evacuation of Town
search & rescue
FIRE & EMS control

coordinate evacuation
of school
contact Benn. Cty. Red
Cross

take loader, back
hoe and 2 lg.
trucks to higher
ground
help with primary
closings of roads &
Town

direct traffic
seal Town
off
control
crowds

NOTES

Fire command will be 92-C-1
Control EMS activities

All organizations coordinate with Emergency Management Director